

VOLA

Testo di
T. BOLOGNA

STRUMENTI in DO

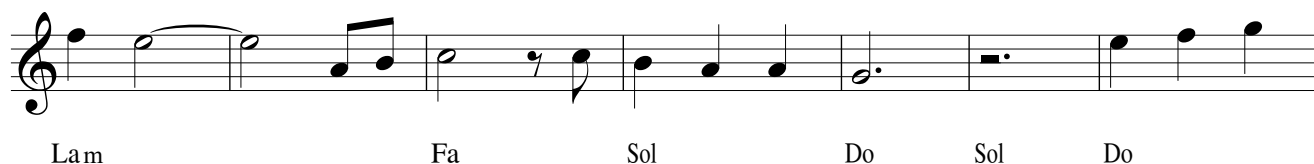
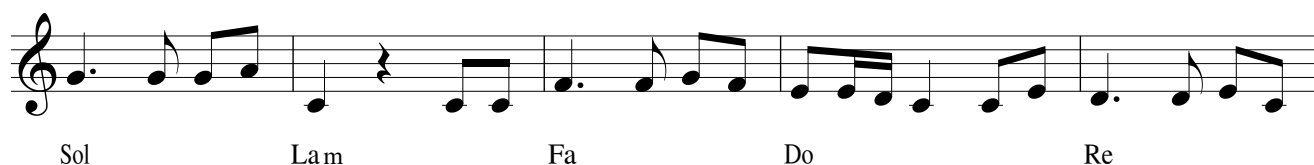
Musica di
D. ZAMBONI - F. COZZANI

Valzer lento

Orch.



Canto



Proprietà per tutti i Paesi:

Edizioni Musicali Bagutti S.n.c. - Via Lavelli, 27 - 29122 Piacenza - Tel. 0523/603410 - edizioni.musicali@bagutti.it www.bagutti.com

© Copyright 2017 by Edizioni Musicali Bagutti . Tutti i diritti sono riservati.

Fa Fa Mi La m Sol 7

The musical notation for the vocal line is written on a single staff. It begins with a treble clef. The notes are: Lam (half note), Fa (half note), Sol (half note), Do (half note), Sol (half note), and Do (half note). The notes are connected by a slur. The lyrics 'Lam Fa Sol Do Sol Do' are written below the staff. The tempo/mood 'And.te' is written above the staff.

Musical notation for the first line of the song. It features a treble clef and a key signature of one flat (B-flat). The melody consists of the following notes: G4 (quarter), A4 (quarter), Bb4 (quarter), A4-G4 (beamed eighth notes), F4 (quarter), E4 (quarter), D4 (quarter), C4 (half). The lyrics 'Sol Lam Fa Sol' are written below the notes.

Do Sol Do Fa Fa Sol

Mi La m Fa Do Sol